

THE NEPTUNE

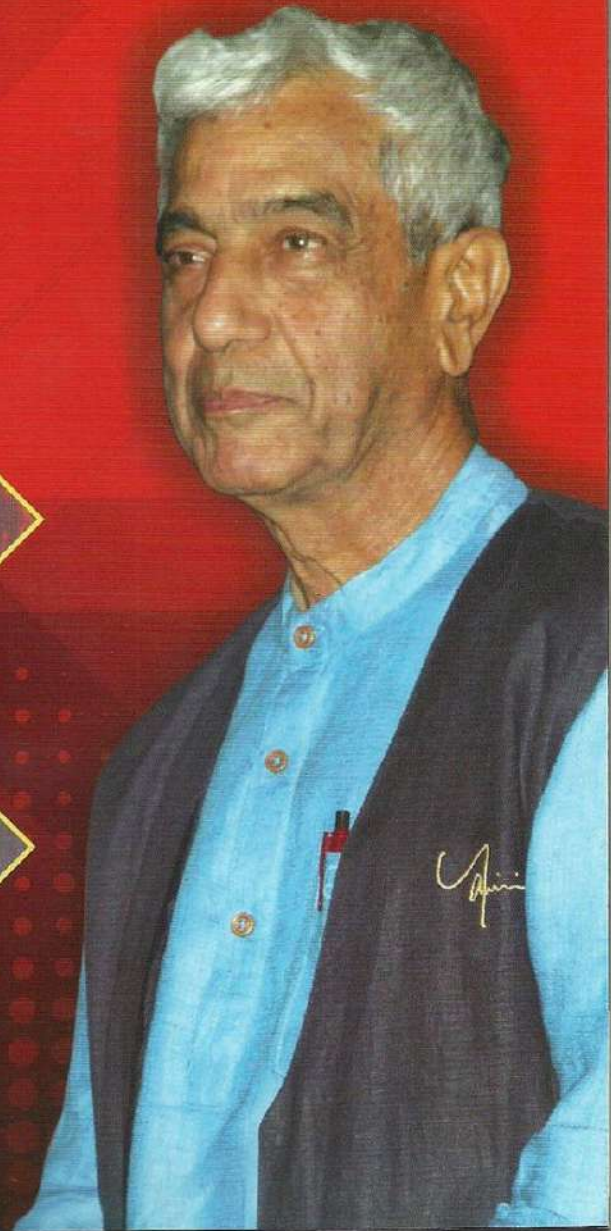
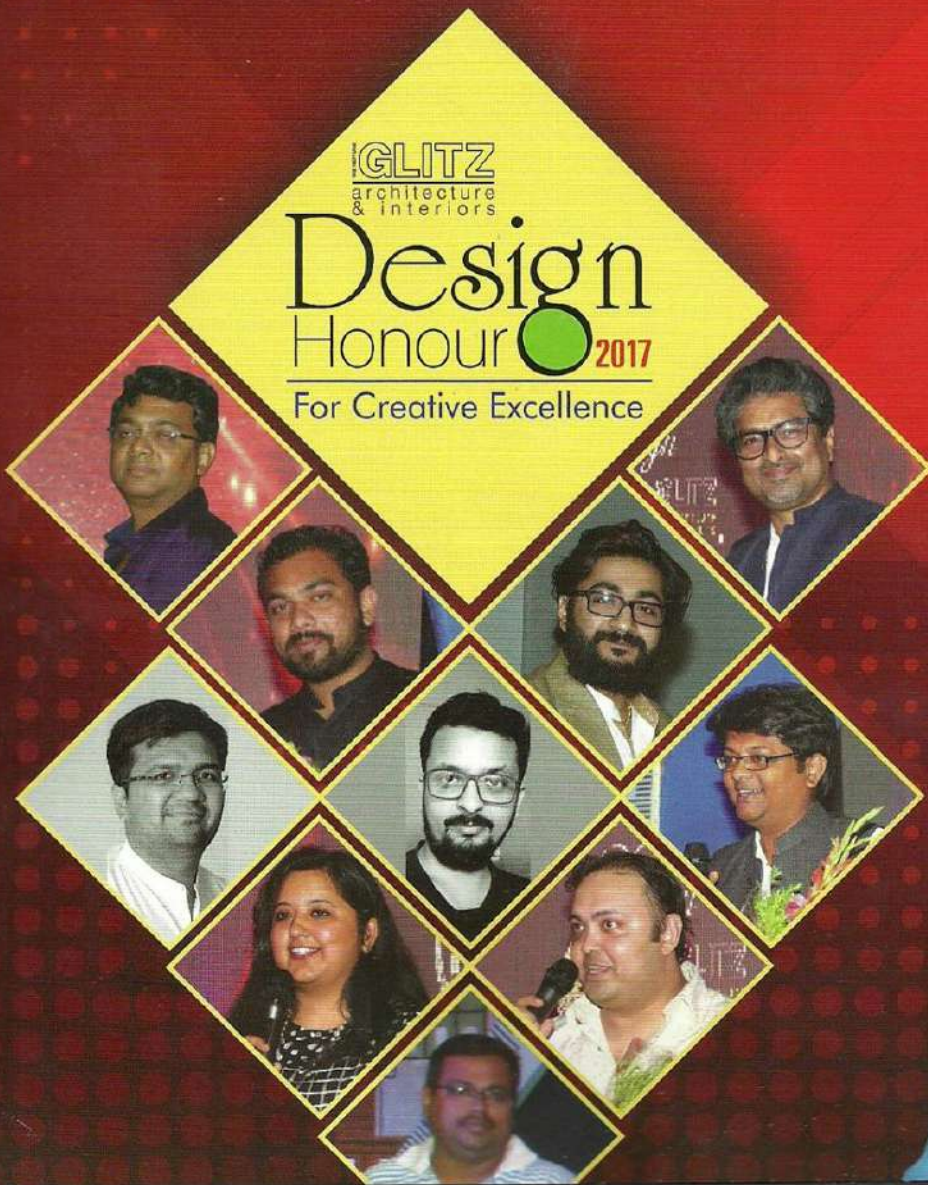
GLITZ

VOL - 4 | ISSUE - 43 | MAY - 2017 | ₹ 100

architecture & interiors

GLITZ
architecture
& interiors

Design
Honour  2017
For Creative Excellence



spotlight



All the winners rejoicing the victory at GLITZ Design Honour-2017, Bhubaneswar.



GLITZ

Design Honour-2017

Celebrating Creative Excellence in Design with Pride



Honourable Chief Guest, Shri Adwaita Gadanayak Lighting the Lamp

The trailblazers and pioneers of the architecture and interior design fraternity got felicitated in style at The Neptune GLITZ Design Honour-2017...

Presented by The Neptune GLITZ and powered by SKIPPER Furnishing, the GLITZ Design Honour-2017 for Creative Excellence, hosted an esteemed awards night for the leaders of the architecture and interior design industry on the 16th of April 2017 at Hotel Hindustan International, Bhubaneswar, witnessed the stalwarts of the design fraternity gathering to celebrate the creative excellence in architecture & interior designing.

awarded project

GLITZ
architecture
& interiors

Design
Honour 2017
For Creative Excellence



For Emerging Interior Designer of the Year

Award goes to

Ar. Ankita Sweety & Ar. Pratyush Chandan

Studio An-V-Thot Architects Pvt.Ltd, New Delhi

Residence: Pores 34, New Delhi

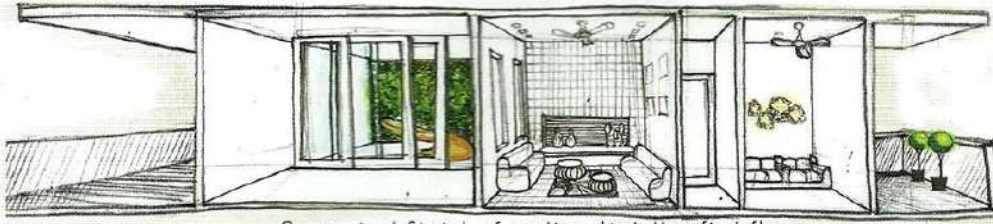
The residence is a 1st & 2nd floor duplex where the planning immediately had to deal with de-cluttering the place as to bring in open plate structure and let the house breathe, to rejuvenate again. With family expansion it was a challenge because of the limitations the old structure had especially the dismantling issues with excessive stone use. Rejuvenating the whole idea by bringing permeability, dynamism and luxury & drama and funk, in optimum proportions within the project, keeping in mind the functions of the project simultaneously bringing a touché of innovation by implementing concepts of "COURTYARD" & "VERTICAL LANDSCAPING" in a new way and also the scale this concept was produced which later gave birth to PORES 34.



Bird's eye perspective at 3D view



Courtyard: Bedroom-1



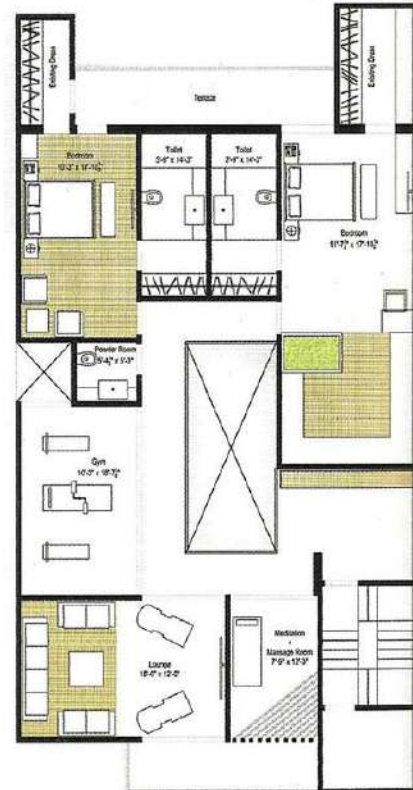
•Conceptual Sketch of section depicting first floor



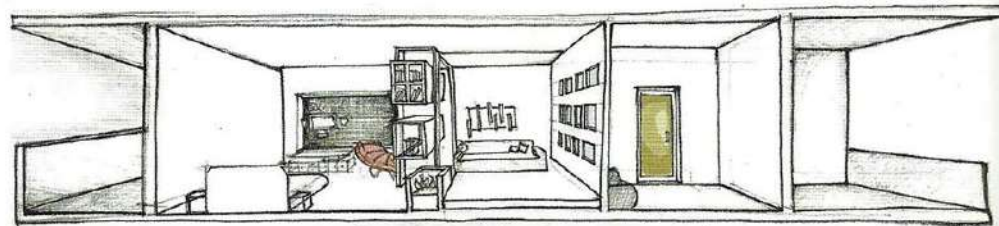
First Floor Layout

With a 30' x 12' enclosure, there was a need to create a visual disconnection so as to divide the entire space into two parts. Focal points were carefully carved out at various intervals throughout the house making this residence an epic journey. Two original bedrooms were combined to make the master bedroom, the focal point of the bedroom is the courtyard with vertical garden all through one side of the room.

The master bedroom was placed at the rear of the house, facing S-W so the openings were closed and desire to bring in indirect sunlight resulted in the creation of this court which can behave as a private outdoor terrace, and at times may become a part of the bedroom as per user's choice.



Second Floor Layout



Conceptual section showcasing second floor

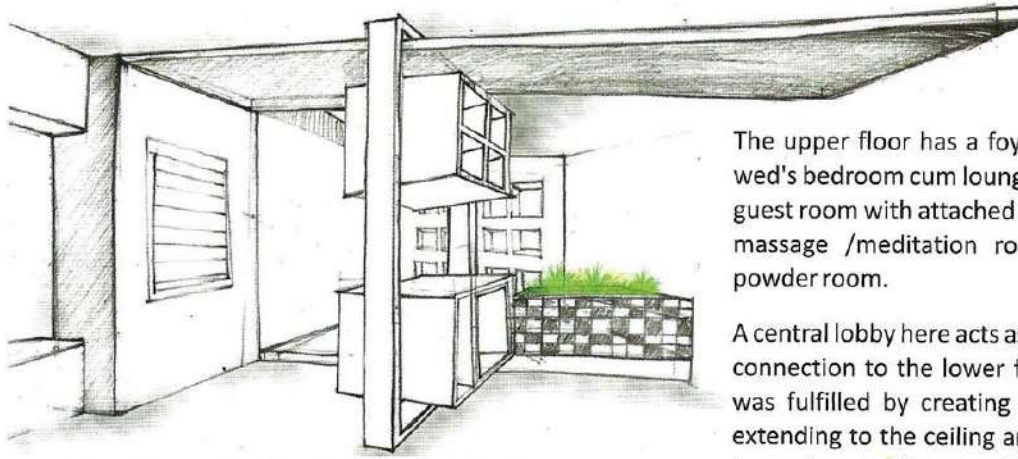


Living area carrying grandeur with a formal lool

The Central Lobby at this floor had a linear rug, where at the deep end, a designer curvilinear chair made of SS & red leather, was placed and an antique studio light-post compliments the chair.

The first floor caters to a living room, a lounge adjacent to a double height lobby, a kitchen overlooking the dining area, a powder room, master bedroom with a walk-in dresser leading to an attached toilet.

A terrace cum courtyard which has been pulled inside to touch the inner parts of the floor, & also can be opened up completely to become a part of the master bedroom is some of the few key focals to highlight about, within the project using the INNOVATION VERTICAL LANDSCAPING.



View of lounge from bed in bedroom-2 showing wooden compartments forming the library to divide the room space

The upper floor has a foyer with waiting, an 'extended newly wed's bedroom cum lounge with attached dress & washroom, a guest room with attached dress & washroom, a family lounge, a massage /meditation room, a multi-purpose room and a powder room.

A central lobby here acts as a circulation space providing a visual connection to the lower floor, the need of visual connectivity was fulfilled by creating a study that turned onto the wall, extending to the ceiling and finally dropping at the floor while becoming a library with show compartments. With this insertion, the room was visually divided into two halves, where one was catered as the bed area and the other half became a lounge with fixed seatings on a raised platform.

With this insertion, the room was visually divided into two halves, where one was catered as the bed area and the other half – a lounge with fixed seatings on a raised platform – level difference created to provide visual segregation of spaces.

A separate pocket was attached to the bed area, which is used as a walk-in dress, secretly also opening onto a private terrace with a set of patio furniture. The whole ambience was intended to be youthful yet classy.

A very important area of this floor was the newly wed's bedroom, for their specific brief to create their room in a way so as to accommodate a complete home within a room, where they could cater to their guests, work at their study, read at the library, enjoy newspaper with coffee at their lounge under the sun or enjoy a private sit-out at their terrace.



Lobby area division showing LOUNGE - informal

All this was achieved through linear extension of the existing room so as to accommodate an existing living area within the room's periphery.

The Guest room sits at the rear left corner of the floor, which is of a subtle mix of warm colours. Wooden flooring has been used throughout this room, brown and beiges can be felt all over with careful insertions of yellow painted in duco.

The family lounge has been specifically kept dark with a relaxed feel to it & has been face-lifted in a retro manner.

As the central area of the house is a double height area, it was very important to enhance this area and bring in a visual connectivity between the floors, necessary for interaction and ventilation.



Lobby area



Courtyard : Bedroom-1



Lounge Area providing a relaxed soothing aura

Lounge has a totally relaxed spatial feel to it, with deep hugging grey sofas & a nice bunch of cushions on it.

The complete floor which turns on to the front wall is of rough cudappah stone in its natural form, complemented by the linear bands of wallpaper at the ceiling level. The whole place is wearing a vibrant attire though a number of colourful artefacts, paintings and an even more youthful set of SS finished centre tables sitting atop a contemporary colourful rug.

The terrace has a vibrant yellow recliner complementing the vertical green, a fix bench with multiple foot massagers and a platform placed at the other deep end hosting a huge & magnificent back lit artefact sitting in a bed of pebbles.

Behind the white wall of JALI, sits a 10 seater Dining, here the table is a glowing square box of back lit, laser cut Corian with glass on top protruding out from all sides. It has 6 chairs with blue leather & a bench with SS legs, the laser cut Corian design is repeated on the ceiling level to bring in a connection.

Dining area overlooks the kitchen, which hosts a wide island counter finished using blue composite with 2 high rise chairs.

As there are two sets of sit-outs on this floor, the architects have tried to develop the Living Room through a formal outlook, using dark wood & dark brown leather sofas, a few tall artefacts sit at the corners, two center tables are placed at hand's reach with green pockets to add life, which are kept on to a pastel shaded warm rug.



Dining area with 6 chairs



Kitchen hosts a wide island counter



Bedroom-2: Recliner with complimenting bright hues

As the central area of the house is a double height area, it was very important to enhance this area and bring in a visual connect between the floors. To start with, the architects dropped down the ceiling as a floating member to visibly decrease the distance between the floors, the hanging ceiling was then punctured to bring in natural light from above, and all the faces was then covered with wallpaper to add drama. The drama was then accentuated by custom made rectangular chandelier, which was further dropped down to enhance the connection. A laser cut, linear back-lit panel, and playful geometries on the wall act as the final touches to the painting of the refreshed house

A courtyard was placed towards the center of the room to add life which was then complemented by bringing in shaded sunlight through a skylight positioned within the lounge area & the attached washroom was finished using black tiles which was then complemented by glittering silver mosaic adding sparkle to the couple's lives.

Every miniscule detail from the hues, to the patterns of jaali, the furniture and the elevations of walls around them, their contrasts and other aspects of aesthetics such as mainting harmony while at the same

The whole ambience was intended to be youthful yet classy, this was done using careful play of hidden lights with complementing hanging lights, a large niche with dark wallpaper at the back acted as a stage for LED, linear bands of cushioned leather ran across the bed-back, blue fabric at one end was used for blinds while the other end has multiple back-lit niches painted blue in the sea of grey.

The Central Lobby at this floor has a linear rug, where at the deep end, a designer curvilinear chair made of SS & red leather, is placed and an antique studio light post compliments the chair from the side. The backdrop here has a wooden finished hanging storage and a six feet wide painting with splashes of colors creating yet another focal point. Such focal points were carefully thought of at various intervals throughout the house.



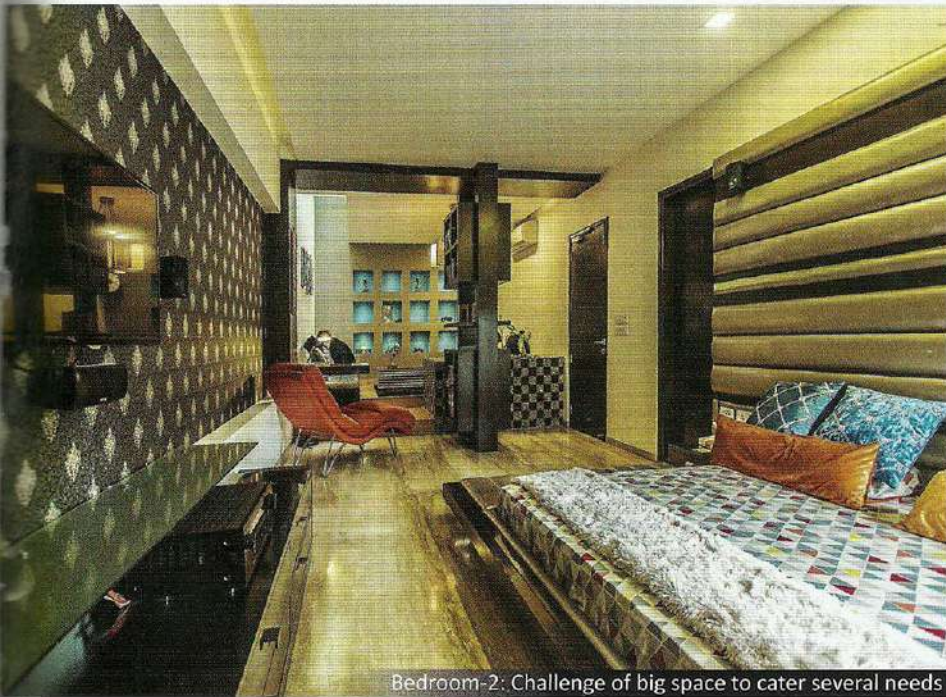
Cutout on first floor giving a glimpse of lower floor



Lounge area: Bedroom-2 playful pores



Bedroom-1 with an innovative vertical garden



Bedroom-2: Challenge of big space to cater several needs



Well equipped toilet done with Dark Emperador stone



Toilets exhibiting pure grandeur

time taking care that the project would not become banal for the clients to reside within, this project was woven up by the architects to the final outcome after overcoming the challenges.

Close up view at the illuminating organic form-light which enhances the room, providing a reflecting change to the linear-dominating formal living room; while the ceiling reflects a simple organic motif wallpaper to keep it sophisticated.



Formal Living Room



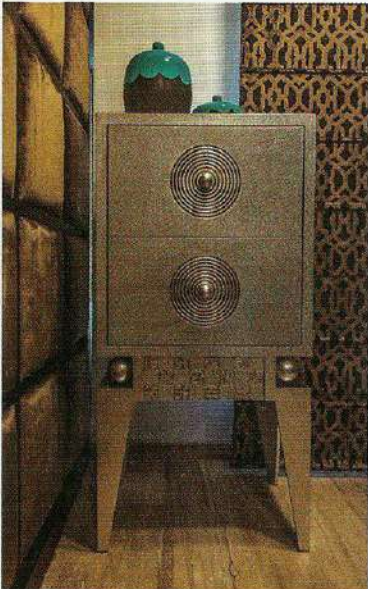
Lounge Area



Lounge area giving a sneak-peek at the Vertical green landscaped wall ornamented with an artefact in the courtyard area further highlighted by the custom-made Yellow recliner.



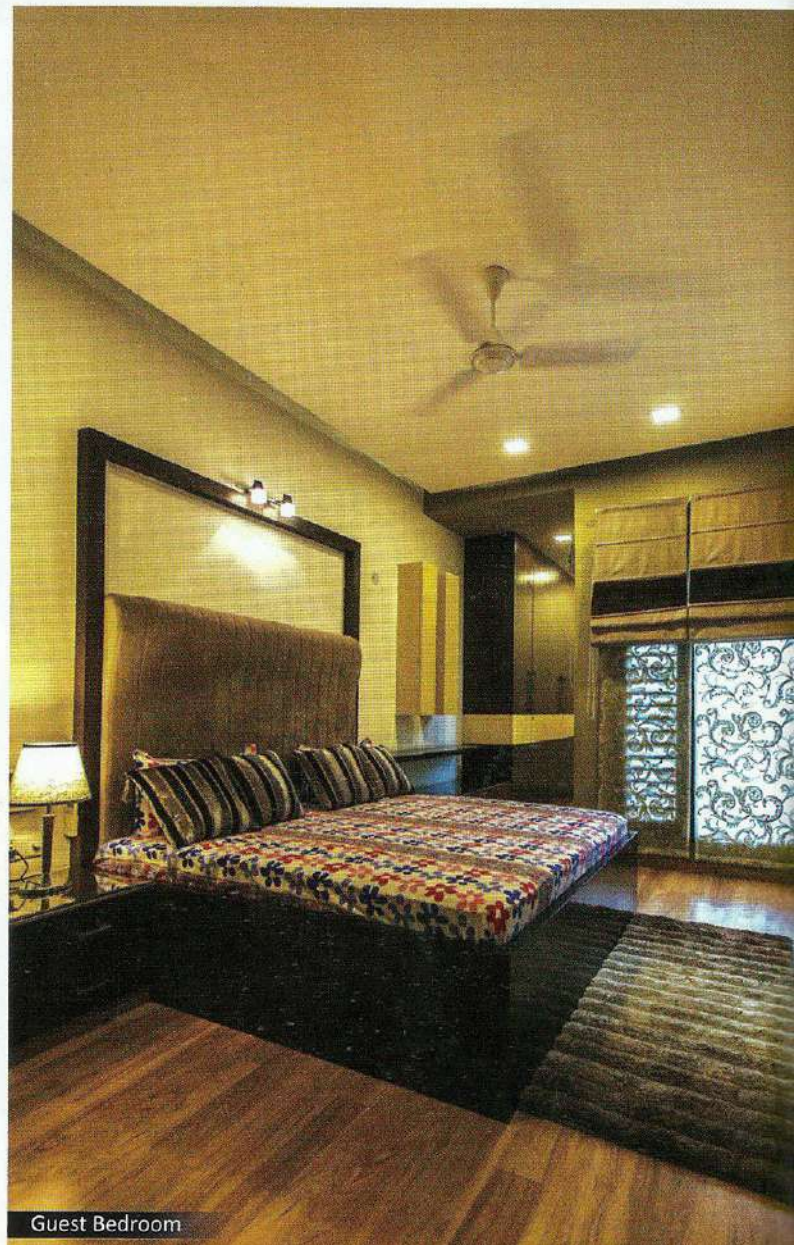
Walk-in Closet of the Master Bedroom defining elegance



Close up view of the vintage side desk designed to enunciate the luxurious look of Master Bedroom.

FACT FILE:

Project Name -
Residence: Pores 34
Location -
New Delhi
Completion Date -
August 2015
Built-up Area -
5000 Sq ft.



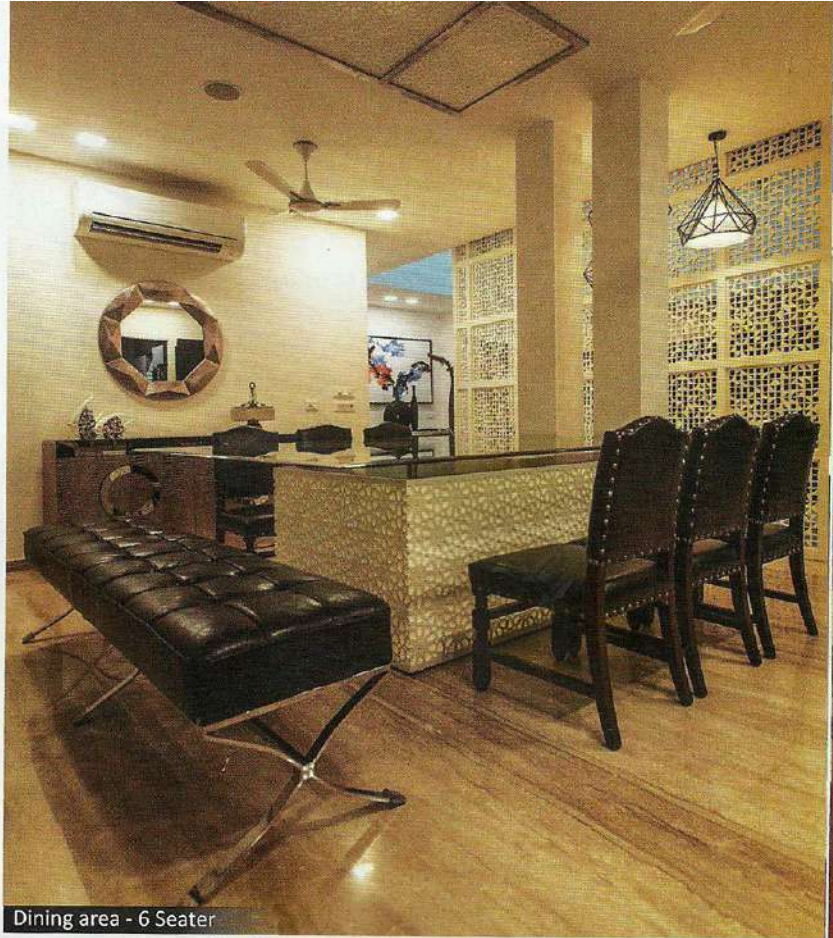
Guest Bedroom



Son's Bedroom Lounge Area



Custom designed Chair



Dining area - 6 Seater

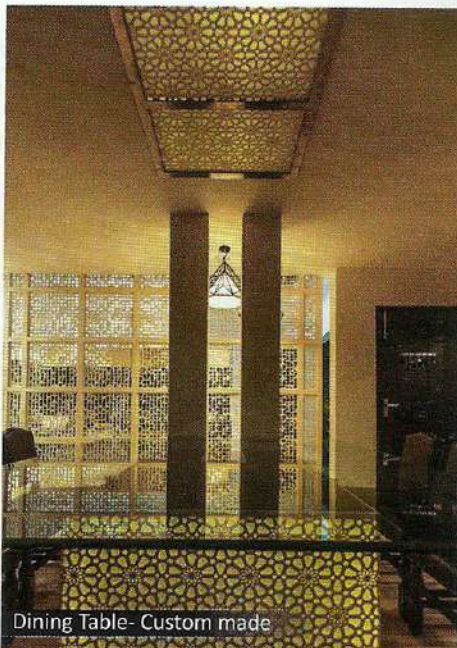
A 10 seater Dining, here the table is a glowing square box of back lit, laser cut Corian with glass on top protruding out from all sides. It has 6 chairs with blue leather & a bench with SS legs, the laser cut Corian design is repeated on the ceiling level to bring in a connection.

The back wall of this area is covered with sky blue patterned wallpaper hosting three vertical niches with glass mosaic

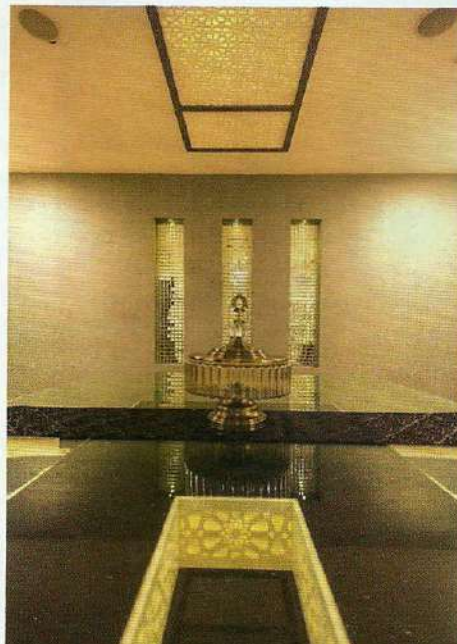
cladded inside them. A rich leather wrapped console & a framed mirror accentuates the adjacent wall.

Dining table defining luxury at its best with the extravagant hues of yellow, the dull gold highlighting the area "typical luxurious" the same organic motif-flower pattern continuing on the ceiling as on the table which covers a laser cut corian top done to avoid the monotony

as a result of the dominating linear shape in each area. These pores in the form of jaalis create a visual permeability giving an edge to the typical closed box – type residences usually done which is the INNOVATION the architects tried to bring up with this residential interior design project.



Dining Table- Custom made



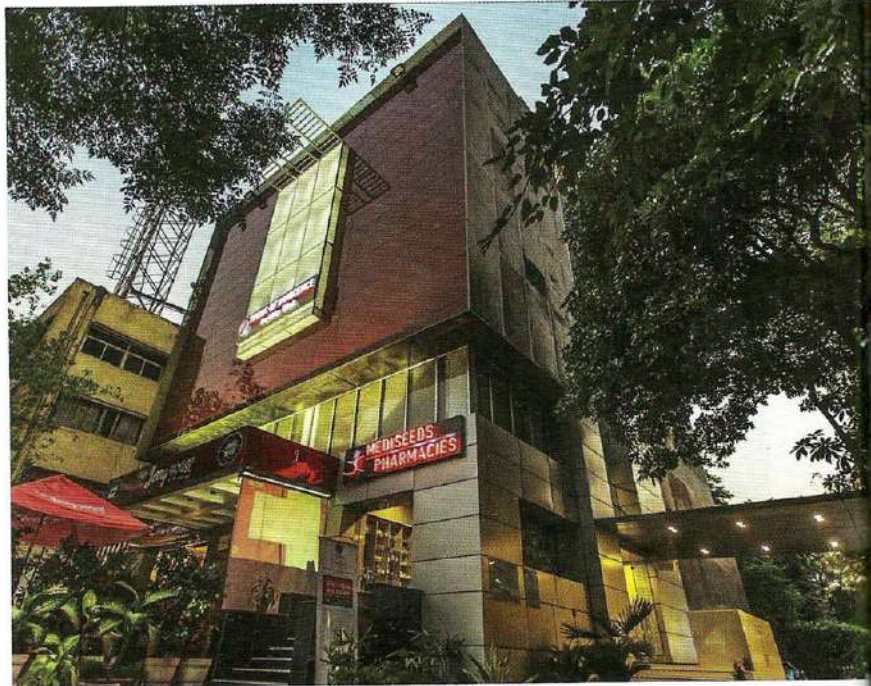
Metallic furniture was designed to provide the "BLING" factor to the dining area also not compensating with the functions. ☺

Seeds of Innocence, New Delhi

The upper floors have stark Marsala colored lacquered panels with the reflection of moving sky all day long which creates a magnificent playfulness along with the backlit perforated box in the center clad with ACP sheet making the structure dynamic in appearance.

The perforated ACP sheets have been used to create an enclosure around the lacquered box to demarcate & define the critical zones with the other areas. The Mezzanine floor has a complete glazing which divides the building into two, separating the upper floors from the Ground floor.

The NICU on the mezzanine has big glass panels which overlooks to the dense greenery outside. The small colorful beds of the new born have wallpapers on the remaining walls & ceiling with geometric shapes, fishes & figurines printed on it.



GLANCE AT THE FACADE AMONGST GREEN, NIGHT view



The patient's room has been developed keeping the bright color only on fabrics and neutral shades on fixed panels & fixtures so that one does not get bored of the whole setup. The grooves have been made on the back wall which turns on to the ceiling to give an effect of a larger space than actual. The attendant's couch is also been changed from a typical convertible bed to a fixed low height running seating along the window wall. The corridor accessing the rooms has checkered pattern on all 3 sides & a horizontal stripe of Marsala all along.

FACT FILE:

Project Name : Seeds of Innocence
 Location : New Delhi
 Completion Date : March 2016
 Built-up Area : 10,000 Sq.ft.



COUNCELLING ROOM

The Nursing Station at the end of the corridor feels divine with the light coming through the perforated MDF sheet at the back. OT can be accessed through the sterile zone with change room & scrub in the front.

The Pre-Post Operation Room on the second floor has a bright & lively graphic design of a teeny-tiny cute baby on one of the wall which adds life to the whole space.

As one enters the building the embossed floral pattern on wall & ceiling welcomes you to the building.



Waiting Area



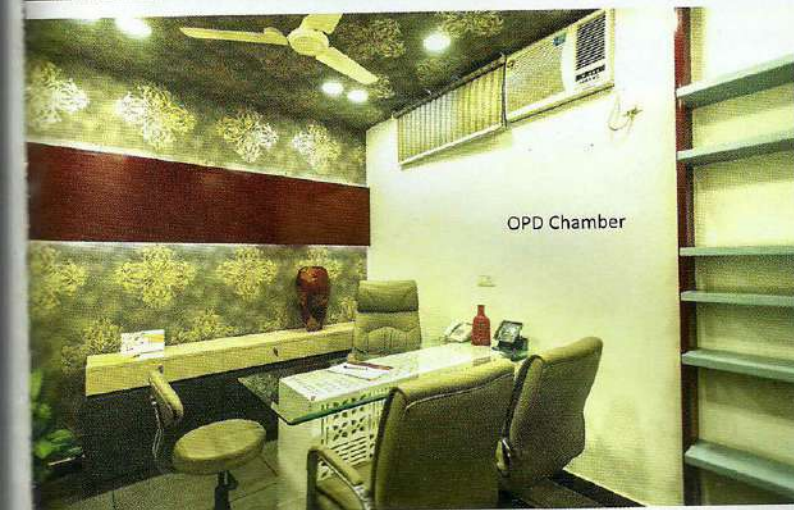
Patient's Room



In Vitro Fertility (IVF) Lab kept minimalistic in interiors to avoid obstruction of functionality within the room.



Organic curvilinear ceiling dropping as seat: Waiting area



OPD Chamber



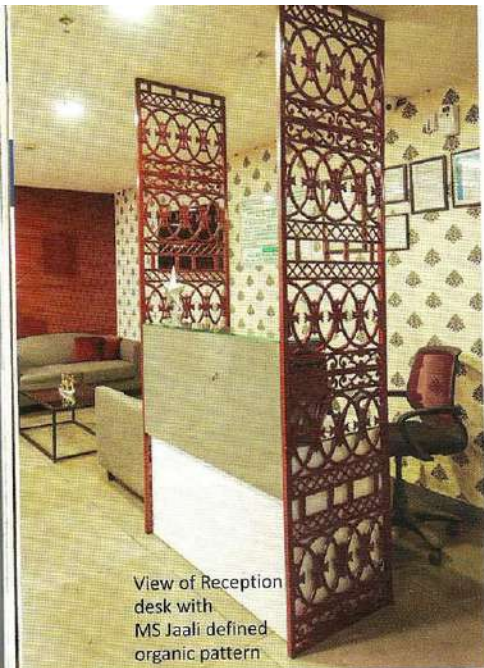
Perspective of waiting IVF



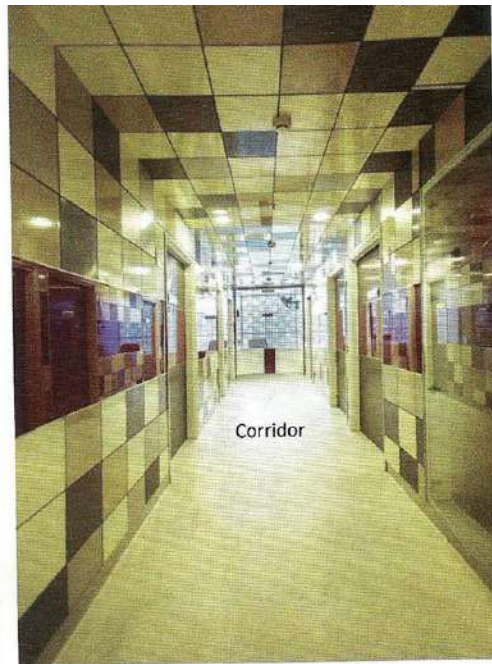
NICU



PRE/POST OP ROOM



View of Reception desk with MS Jaali defined organic pattern



Corridor

doctors to understand the whole procedure of IVF, surrogacy or Fertility issues. The OPD chamber has a very simple backlit laser cut MDF sheet as supports for the doctor's table with an 8 mm thick toughened glass on top. A dedicated panel for hanging the certificates & licenses has been made on the back wall in Marsala color with coves on both the sides.

"An effort to balance the clinical demands of the healthcare institution and a humane architecture by evolving a concept which communicated a fresh vocabulary towards developing the image of the hospital, as a stereotypical conventional building that houses sick patients; to a space delivering an integrated arena combining healthcare with comfort, positive ambience and liveliness, which is an essential factor in making the couples feel comfortable. The building stands tall in embracing the tenets of contemporary architecture; thus successfully redefining the setup of a small scale healthcare setup with an innocence in design." ©

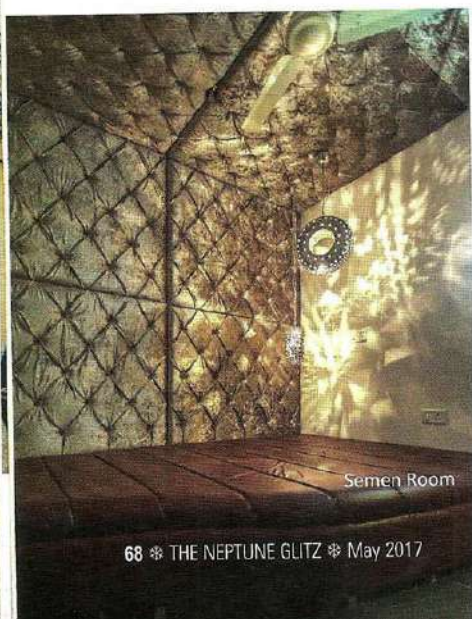
Upon reaching the basement the first thing which attracts the person is the Reception with custom designed table supported by the vintage wrought iron partition on both the sides with the Marsala colored lacquered panel clad on the wall at the backdrop which invokes a sense of impenetrable liveliness. The Waiting at the back has a very interesting setup of couches & undulating fixed seats with geometric shaped center tables in cluster pattern. Marsala has been chosen for the reason of its resemblance to the color of blood, new life, new beginning. Contrary to the exteriors less of the bright

Marsala has been used, instead the whole setup has hues & tints of neutral shades of Greys, Beiges & Off-whites with a patch of Marsala to break the mundaneness. After a lot of spatial explorations and trying various permutations for relationship between spaces the basement level was evolved as a series of aligned spaces to avoid the rabbit-warren type configurational arrangement of consultancy rooms on one side and administrative section on the other side. The OPD chambers have been placed all along the exterior wall of the rear portion of the block creating a huge central open space in the center.

By laser cut MDF panels placed in a rhythmic organic form providing transparency and privacy at the same time. It acts as a focal point with alternate horizontal 35 mm thick MDF board member & a gap of 2 inches till the top with varying sizes creating an undulating free flowing curves on all the sides. The ceiling of the whole area has been kept simple with checkered pattern with alternating different shades of Greys, Beiges & Off-whites. The counselling area has an informal seating where the couple can relax & chit-chat with the



Waiting in Basement



Semen Room



Entrance Jali

Studio AVT, New Delhi



WORKSTATION

The brief was to create a work place of its own world of colors and spatiality as the location was surrounded with the chaotic urban environment of Delhi. The challenge was to design and develop the space within very strict budget and timeline.

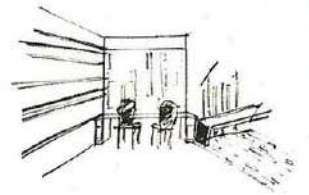
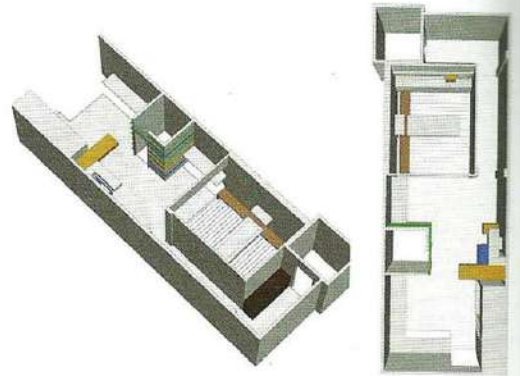
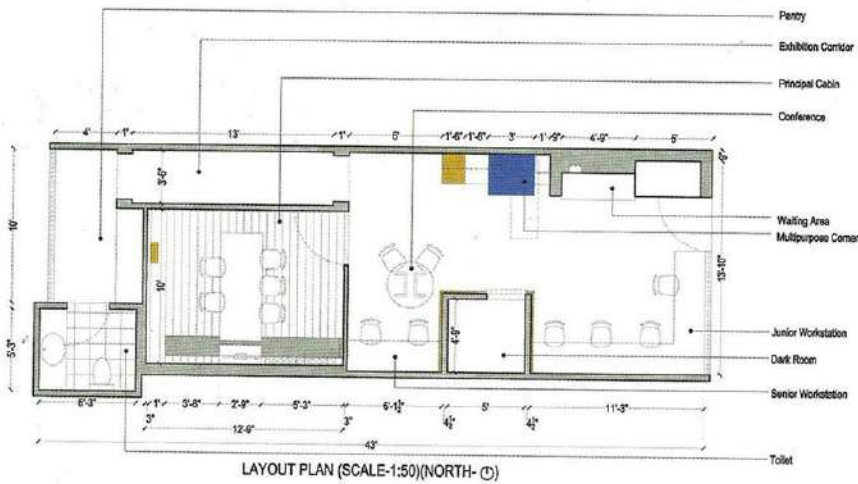
As the door opens, multiple frames of illusion can be felt and the spaces emerge as question marks, bringing the inquisitive youth from within. The free flowing layout leads to the view of contrasting spatial experiences where directions can be felt through eyes. The first volume of space has a junior studio with high display panels to its left, facing the library cum waiting area. The Studio welcomes you with optimum and precise usage of the color Blue in the niche of the sunken Waiting Area, symmetrically positioned pigeon holes for exposed display of books and magazines while using White as the backdrop. The usage of dark Wallpaper here adds contrast to the enclosure.

The 650 sq ft. Studio has been planned on a hierarchy system. This was achieved by placing a dark room in the

center which gives birth to a junior zone and a senior zone, while an imaginary path thus created, from one end to the other end of the office, takes the visitor through various volumes of spatial experiences. The third zone is created in the rear most area which caters to the services without disturbing the rest of the Office. The irony of the dark room which is clad with the bands of Yellow, Blue and Brown clearly shows the intention of the designers to add an embodied humor.

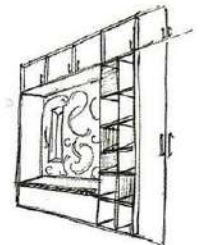


THE CORNER



FACT FILE:

- Project : Studio AVT
- Location : New Delhi
- Area : 650 sq.ft.
- Duration : 45 days
- Completion : June 2012
- Cost : Rs. 7,50,000/-



CABIN & CORRIDOR

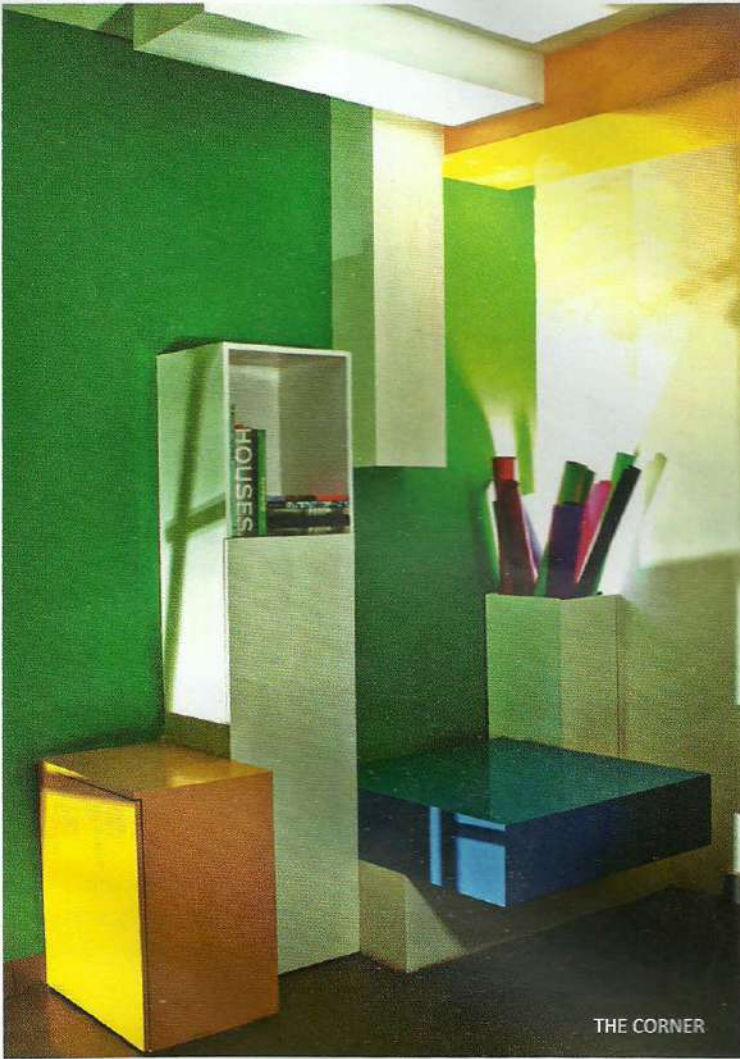
The “boxes of colors” were brought to life by the result of an intention to break free with the conventional storage design, in an expression to explode with harmony, balance & color. The space acts as a display for project model which is in fact a model in itself. A casual seating is an add-on to the space and interestingly it also acts as transitional space and focal point of the whole area. The space next to the dark room acts as Senior Studio, again with high display panels to create an aesthetically

pleasing environment while serving the purpose of maximum display for an Architect's studio. This area also caters to a Discussion/ Conference area. The “ladder” behaves as the floating member of the team with a flexibility to change its position & dramatically add depth, life and color in any given frame.

The exhibition space is developed with a dropped down ceiling to break the proportion and give a dramatic effect to the whole area while adding a story to the passage. This dark corridor with the

play of light acts as a display unit and serves as the contrast to the vibrant playfulness of the rest of the studio.

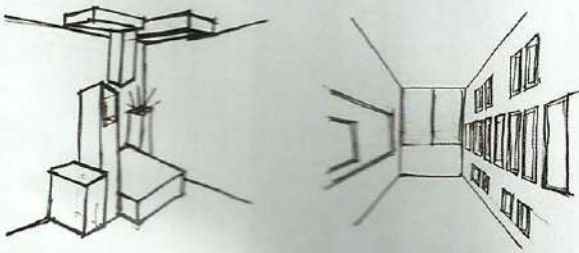
The Principal Cabin can be seen as a mix of youthfulness and authority overlooking the rest of the office. This was achieved through usage of low saturated colors with a single small box of yellow to intentionally break the attitude. The purpose to use white furniture is to give importance to the vibrancy of displays all around. Apart from three visitor chairs, the linear and



THE CORNER



EXHIBITION CORRIDOR



WORKSTATION + WAITING

elongated seating here with floating supports serves the basic necessity of multiple visitors while increasing the depth of vision.

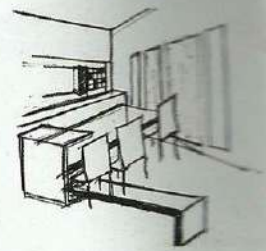
The selection and placement of various materials were dependent on two main criteria;

- Hierarchy of importance
- Color, texture and reflectivity!

Grey PVC Flooring is used throughout the Office except the Principal Cabin to add neutrality and balance the vibrancy of the Studio. Wooden laminate flooring is used in the Main Cabin. A large amount of MDF finished with German based PU Pigment Paint has been used for Blue, Yellow and White. It has a quality to devoid wood completely of its appearance and brings in reflectivity & shine to the surface. This leads to a dramatic environment with the play of shadows, light and reflection. Dark wallpapers can be thematically seen at various intervals. Gypsum board partitions and false ceilings were used to cater to time constraints. Glass is also used for partitions which provide privacy while still managing to flaunt the lightness and transparency. A lot of light had to be used in creation of these dynamic ambiances, so LEDs were an



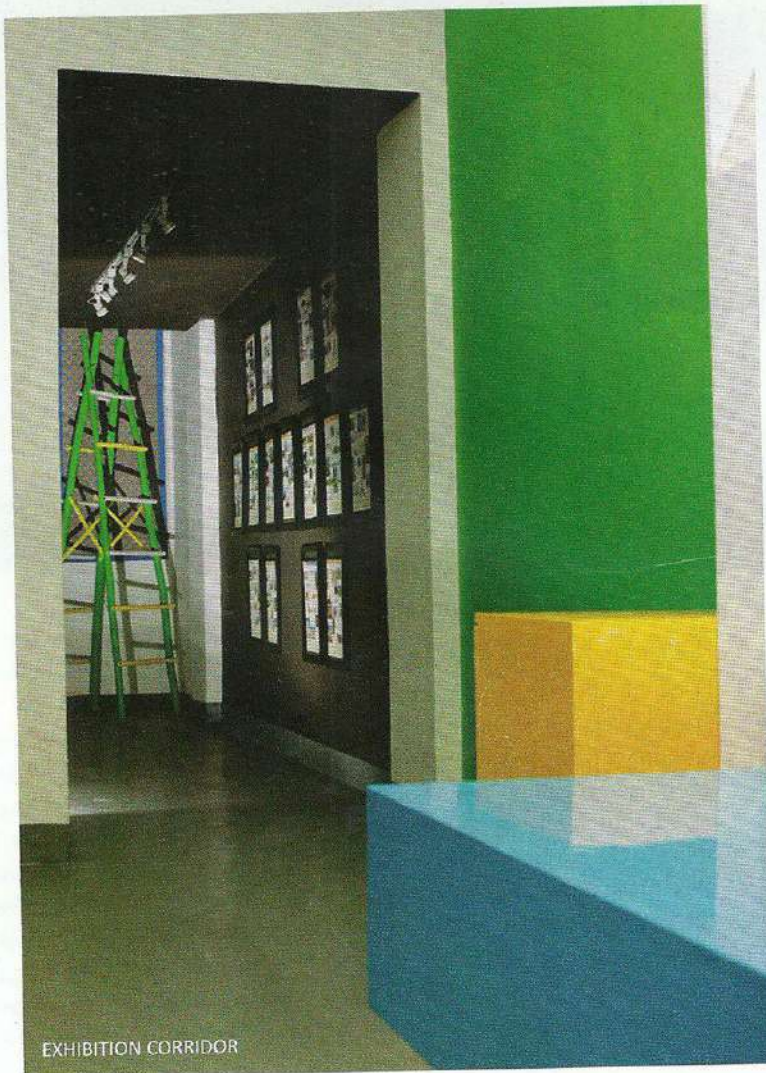
MAIN CABIN



obvious choice for its low energy consumption quality. Low density fiber boards with a selection of fabrics were used for the display panels. The blinds were procured from various road side vendors with high quality craftsmanship.

The Studio is undoubtedly a designer's expression of life within boundaries, where

colors add a playfulness so as to give freedom for thoughts and ideas to take birth & evolve with an intention of positivity. In a city that drains you with its clusters, traffic, noise and where workplaces are limited by scarcity of space and air; this place has a life of itself, where energy can be seen and felt throughout. ©



EXHIBITION CORRIDOR



CORRIDOR FROM CORRIDOR